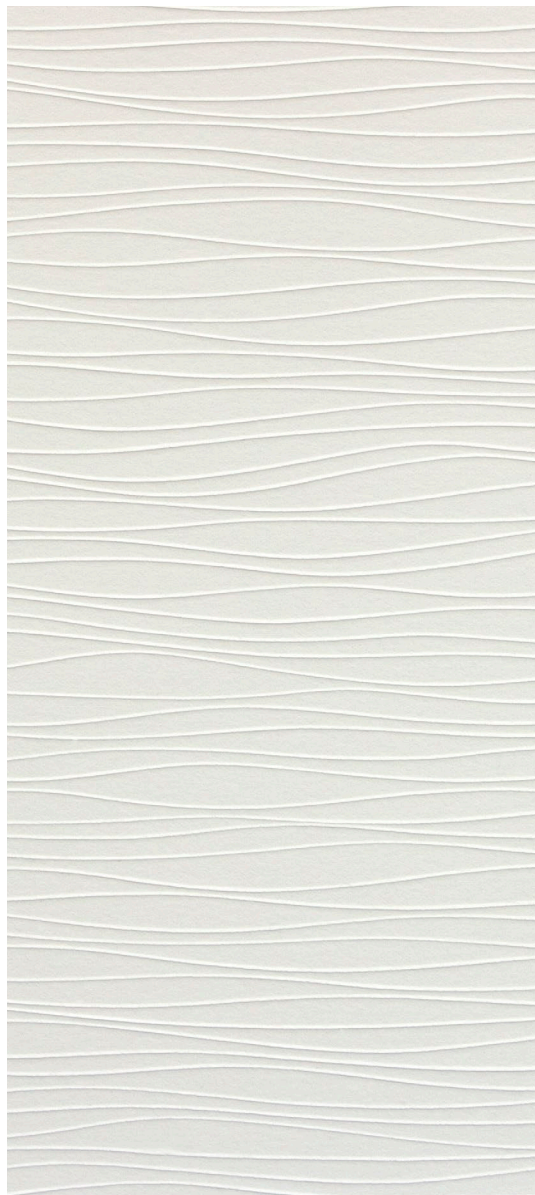


ANN CHUCHVARA  
SOHPIA DIXON DILLO REBECCA HUTCHINSON

---

ETHEREAL PAPER

April 22 - June 3, 2017  
The Barn at 28 Main, Walpole, NH



CYNTHIA-REEVES

cynthia-reeves.com 212.714.0044



## ANN CHUCHVARA

Tracing paper, thread, wire, and other ordinary supplies are Ann Chuchvara's materials of choice. Her delicate constructions transform the inconspicuous and the everyday into vast and intricate webs, inspired by nature's often fleeting splendor. Subtle beauty lost in the everyday is suddenly, and extraordinarily, brought to life through her use of pattern and repetition.

Chuchvara's work consists of accumulations of sculptural elements, highlighting significance in the insignificant. Chuchvara focuses on the relationship between time and valuation, explaining that attention and repetition can transform a common object or a simple activity into something valuable - something extraordinary.

Initially drawn to ceramics, Chuchvara graduated with a Master of Fine Arts degree from University of Colorado after earning her Bachelor of Fine Arts Degree from Grand Valley State University. While process itself originally attracted her to ceramics, Chuchvara later discovered that the strength in her work was truly realized when working with more ephemeral and less substantial materials.



Ann Chuchvara, *await*, 2002,  
oil on canvas, 78 x 80 inches



Ann Chuchvara, *dormant*, 2015,  
cut paper, wire, acrylic, dimensions variable



Ann Chuchvara, *dormant*, 2015,  
cut paper, wire, acrylic, dimensions variable

CYNTHIA-REEVES



Ann Chuchvara, *sipe*, 2015,  
handcut paper, gold leaf, pins, 120 x 42 x 2 inches

CYNTHIA-REEVES



Ann Chuchvara, *sipe*, 2015,  
handcut paper, gold leaf, pins, 120 x 42 x 2 inches

# CYNTHIA - REEVES

---

## ANN CHUCHVARA

### EDUCATION

- 1999 MFA, Ceramics, University of Colorado at Boulder
- 1995 BFA, Ceramics, Grand Valley State University, Allendale, MI
- 1990 Associate of Arts, Northwestern Michigan College, Traverse City, MI

### SELECT SOLO AND GROUP EXHIBITIONS

- 2017 *Chuchvara / Wassenaar*, 337 Project Space, Grand Rapids, MI
- 2016 *Beyond Material*, Sierra Nevada College, Reno, NV  
*Coming Home: Sticks and Squares*, UICA, Grand Rapids, MI
- 2015 *Loosely Bound*, Gallery 106, Calvin College Grand Rapids, MI  
*Let's Get Started*, LaFontsee Galleries, Grand Rapids, MI  
*Slightly Obsessive*, Lafontsee Gallery, Douglas, MI  
*Beyond Material*, Scene Metro Space, East Lansing, MI
- 2014 *Slightly Obsessive II*, Lafontsee Gallery, Douglas, MI  
*Even/End*, Culture Works, Holland, Michigan  
*Out of the Polar Vortex*, Lafontsee Gallery, Grand Rapids, MI  
*UICA Live Coverage*, UICA, Grand Rapids, MI
- 2013 *Slightly Obsessive*, Lafontsee Gallery, Douglas, Michigan  
*Residuum*, Scene Metro Space, East Lansing, Michigan  
*UICA Live Coverage*, UICA, Grand Rapids, MI
- 2012 *UICA Live Coverage*, Steelcase Town Hall, Grand Rapids, MI  
*Working Towards Invisible*, Marygrove College, Detroit MI
- 2011 *Island 22 Artists on Iceland*, Eastern Michigan University, Ypsilanti, MI  
*What Remains*, Northwestern College, Orange City, IA  
*Canopy*, Women's City Club, Grand Rapids, MI  
*Point / Counterpoint*, The Andrews Gallery, College of William & Mary, Williamsburg, VA  
*(a)wake*, The Cornerstone Building, Grand Rapids, MI
- 2010 *Arts and Hearts*, The Pajama Factory, Willamsport, PA  
*The Other F Word*, HFA Gallery, University of Minnesota, Morris
- 2009 *Finding Water*, Nes Artist Residency, Skagastrond, Iceland.
- 2007 *Luring*, Urban Institute for Contemporary Art, Grand Rapids, MI  
*Transparent*, Urban Institute of Contemporary Art, Grand Rapids, MI  
*Ann Chuchvara*, Macomb Community College Gallery, Clinton Twp, MI  
*Distill*, International Artist Group, La CCE Benjamin Carrion, Quito, Ecuador  
*3rd European Textile and Fibre Art Triennial*, Museum of Decorative Arts and Design, Riga, Latvia  
*Faculty Exhibition Fall 2007*, Interlochen Center for the Arts, Interlochen, MI
- 2006 *The Knitting of Time*, Reykjavik Art Museum, Reykjavik, Iceland  
*Faculty Exhibition Fall 2007*, Interlochen Center for the Arts, Interlochen, MI  
*The Knitting of Time*, Distill International Artist Group, Reykjanes Art Museum, Reykjanes, Iceland  
*Northwest Michigan Regional*, Dennos Museum Center, Traverse City, MI
- 2005 *Project Button*, Art Collective and Exchange, New York, NY  
*Annual Paperwork*, In On, and of Paper II, Foundry Art Center, St. Louis, MO  
*Postcards from the Edge*, Robert Miller Gallery, New York, NY
- 2004 *Faculty Exhibition Fall 2004*, Interlochen Center for the Arts, Interlochen, MI



# CYNTHIA - REEVES

---

## ANN CHUCHVARA

### SELECT SOLO AND GROUP EXHIBITIONS CONTINUED

- 2004 *Faculty Exhibition Summer 2004*, Interlochen Center for the Arts, Interlochen MI  
*Dia De Los Muertos*, Free Radical Gallery, Grand Rapids, MI
- 2003 *Faculty Exhibition Fall 2003*, Interlochen Center for the Arts, Interlochen MI  
*Faculty Exhibition Summer 2003*, Interlochen Center for the Arts, Interlochen MI
- 2002 *Gravity/Levity*, Dairy Center for the Arts, Boulder CO  
*Counting*, Hafnarborg Cultural Center, Hafnarfjordur, Iceland
- 2001 *Light Memory*, Rocky Mtn. College of Art and Design, Denver, CO  
*Distill*, ARC Gallery, Chicago, IL
- 2000 *Kendall College of Art and Design Juried Competition*, Grand Rapids MI  
*Permeate*, Dynamite Gallery Project, Grand Rapids, MI  
*Contemporary Visions 2000*, University of Bridgeport, Bridgeport, CT
- 1999 *Countdown*, John Sommers Gallery, University of New Mexico, Albuquerque, NM  
*Edge Invitational*, Edge Gallery, Denver, CO
- 1998 *Emerging*, UMC Art Gallery, Boulder, CO
- 1997 *Minor Details*, Edge Gallery, Denver, CO  
*Sugar*, Silver Squire Lofts, Denver, CO

### ARTIST RESIDENCIES

- 2009 Nes Artist Residency, Skagastrond, Iceland
- 2007 Can Serrat, Artist Residency, Barcelona, Spain

### GRANTS AND AWARDS

- 2009 Artist Grant, Nes Artist Residency, Skagastrond, Iceland
- 2008 Fisher Scholarship, Penland School of Crafts, Handmade wallpaper
- 2007 Artist Grant, Can Serrat, Artist Residency, Barcelona, Spain  
FSEP Grant Interlochen Arts Academy, Jaquard Weaving Certification, Eastern Michigan
- 2006 FSEP Travel Grant Interlochen Center for the arts, Can Serrat, Spain  
Honorable Mention, Northwest Michigan Regional, Dennon Museum Center, Traverse City, MI
- 2004 FSEP Grant, Interlochen Arts Academy, Surface Design Workshop Arrowmont School of Crafts
- 2000 3rd Place, Kendall College of Art and Design Juried Competition, Grand Rapids MI
- 1997 Beverly Sears Dean's Small Grand, University of Colorado, Boulder

### INVITED LECTURES

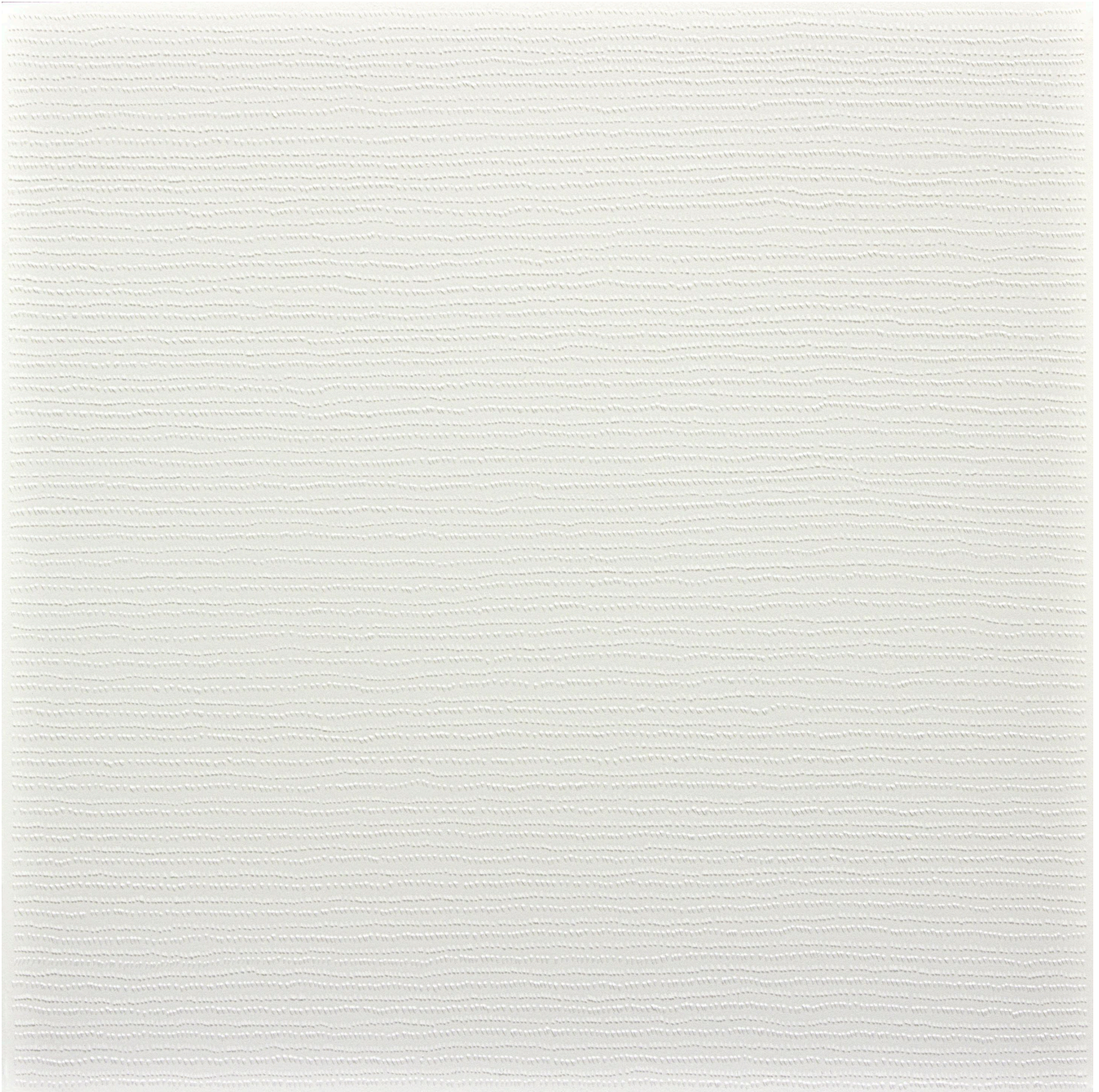
- 2016 Visiting Artist, Calvin College Art Department, Grand Rapids, MI
- 2015 Visiting Artist, Lecture and Fashion Workshop, Culture Works, Holland, MI.
- 2013 Visiting Artist, Design and Industry Lecture, School of the Art Institute of Chicago  
Art Works Education Lecture, Sketchbook Inspiration and Workshop, Urban  
Institute of Contemporary Art, Grand Rapids, MI
- 2001 Visiting Artist Lecture, Rocky Mountain College of Art and Design, Denver, CO



## SOPHIA DIXON DILLO

Sophia Dixon Dillo is known for incorporating the active medium of light into her quiet and delicate work. Made from transparent and translucent materials, on both a large and small scale, she employs subtle patterning to draw the viewer's attention from the particular to the whole. These works are experiential, and require the viewer's presence, in order to witness the ever-shifting movement of light on the artwork.

Born and raised in the San Francisco Bay Area, Dillo grew up watching her father, artist Willard Dixon, paint in his studio, and began to explore abstract painting in her early years as an artist. She studied formally at the Lacoste Ecole des Arts in Lacoste, France, and completed her academic education with a MFA from Colorado State University in 2009. Her work is collected and exhibits throughout the U.S. and internationally. In 2015 she completed an installation for the Calvin Klein Collection on Madison Avenue in New York made from 83 miles of copper thread. Her recent solo exhibit, Emergence, was chosen as a "Pick of the Week" by ArtWeekLA.



Sophia Dixon Dillo, *Untitled 2412*, 2013,  
paper, 26 x 26 ¼ inches

CYNTHIA-REEVES



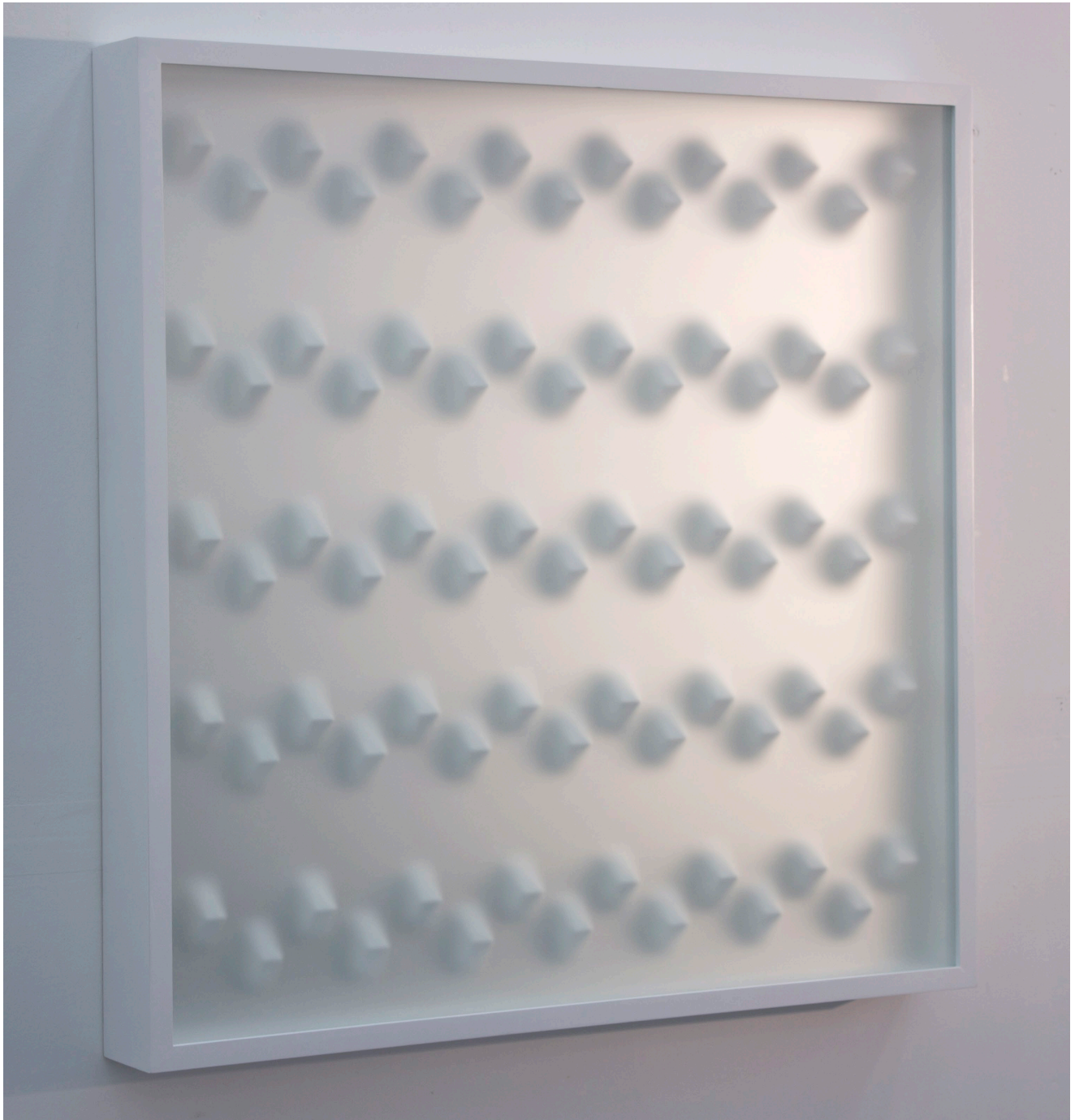
Sophia Dixon Dillo, *Untitled 2412*, (detail), 2013,  
paper, 26 x 26 ¼ inches



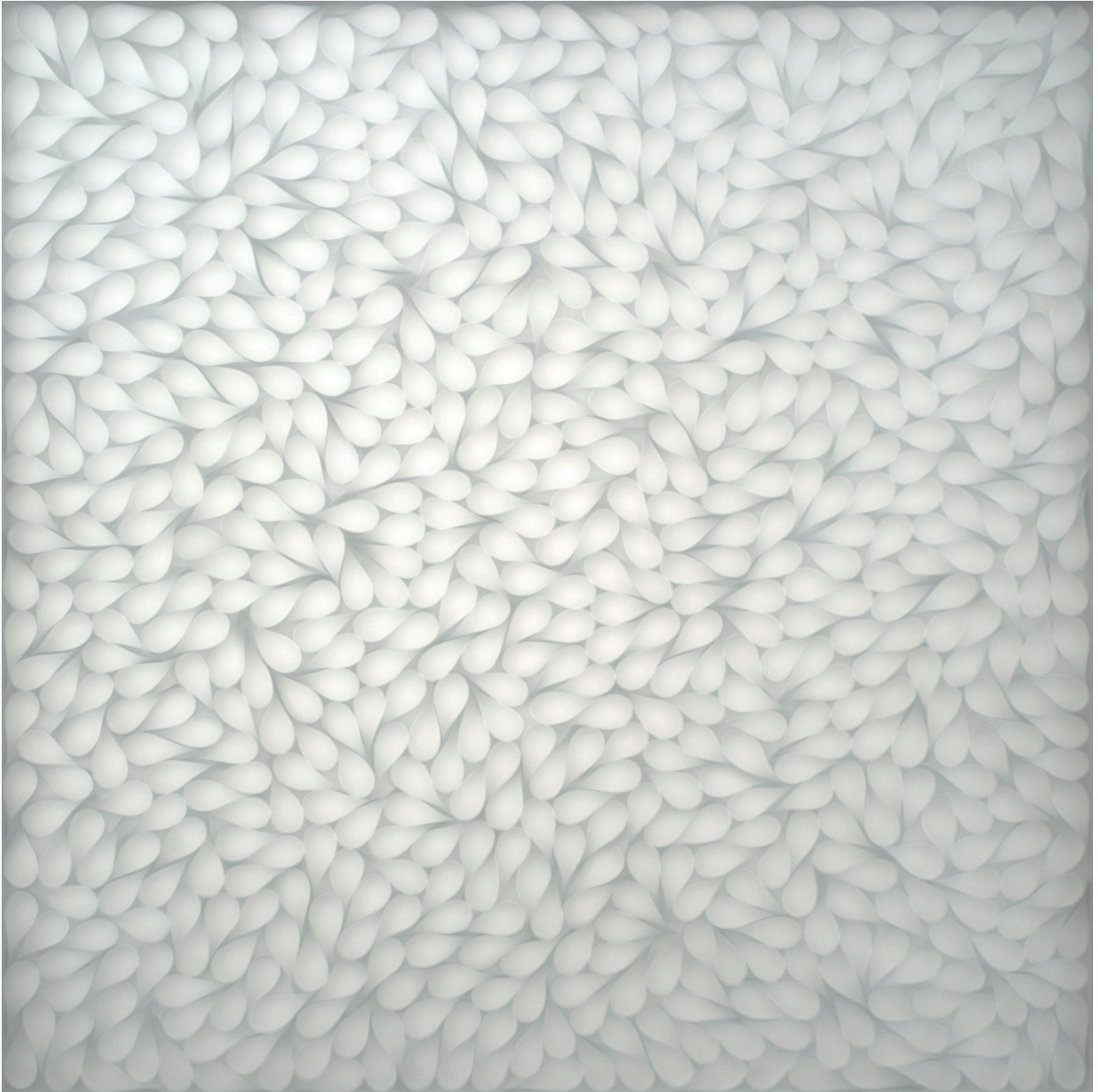
Sophia Dixon Dillo, *Untitled 2413*, 2013,  
paper, 26 x 26 ¼ inches



Sophia Dixon Dillo, *Untitled 2413*, (detail), 2013,  
paper, 26 x 26 1/4 inches

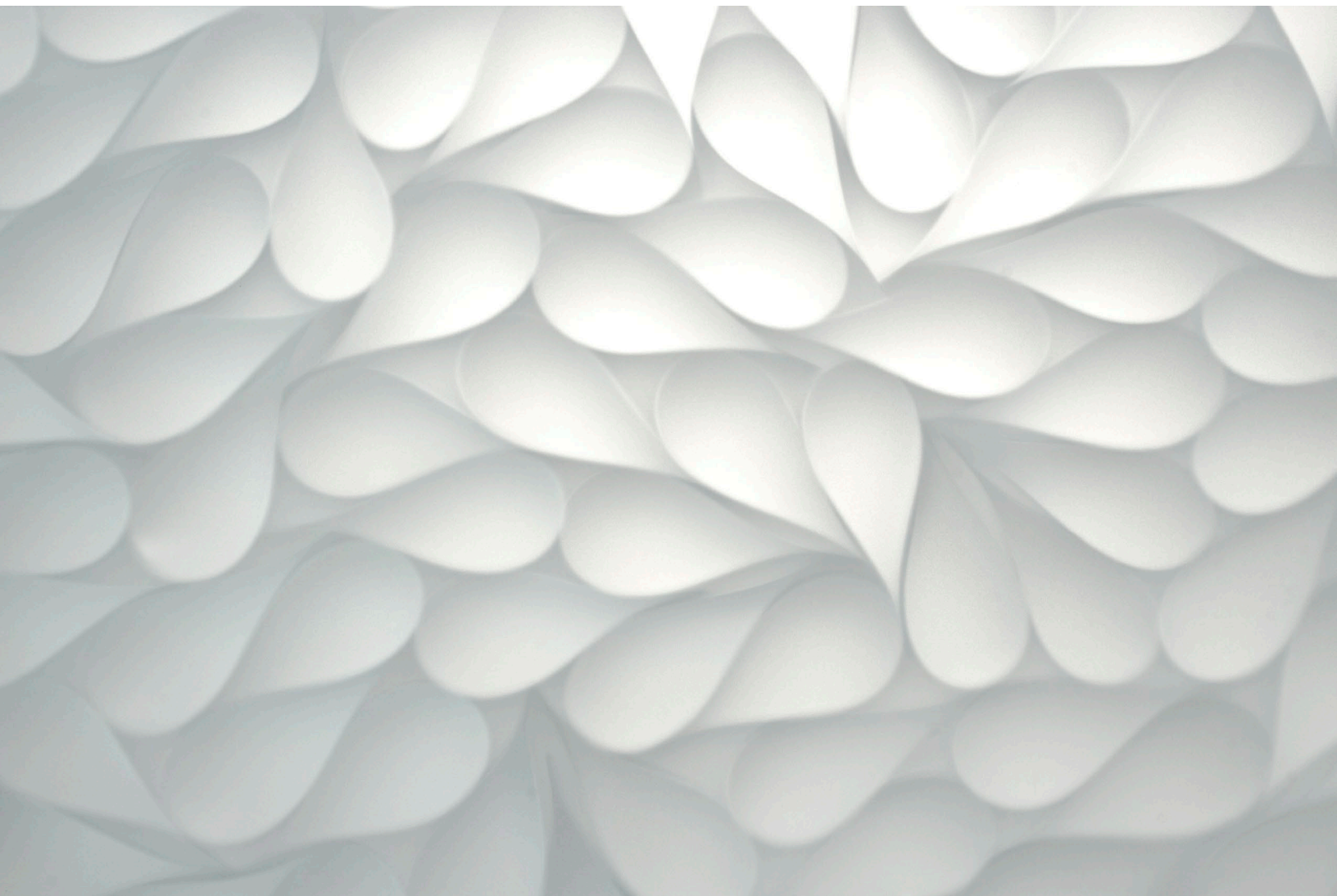


Sophia Dixon Dillo, *Untitled 2396*, 2015,  
mixed media, 31 x 31 x 3 1/2 inches



Sophia Dixon Dillo, *Untitled 2397*, 2016,  
mixed media, 31 x 31 x 3 1/2 inches





Sophia Dixon Dillo, *Untitled 2397*, (detail), 2016,  
mixed media, 31 x 31 x 3 ½ inches

CYNTHIA-REEVES



Sophia Dixon Dillo, *Untitled 2399*, 2012,  
mixed media, 31 x 31 x 3 1/2 inches



Sophia Dixon Dillo, *Untitled 2399*, (detail), 2012,  
mixed media, 31 x 31 x 3 1/2 inches

# CYNTHIA - REEVES

---

## SOPHIA DIXON DILLO

### EDUCATION

- 2009 MFA, Colorado State University, Fort Collins, CO
- 2005 University of Colorado, Boulder, CO
- 2001 Lacoste Ecole des Arts, Lacoste, France
- 2000 BA, Colorado College, Colorado Springs, CO

### ARTIST RESIDENCIES

- 2015 Lucid Art Foundation, Inverness, California
- 2002 Vermont Studio Center, Johnson, Vermont

### PROFESSIONAL ENGAGEMENTS

- 2015 Artist Symposium, Shumei International Institute, Crestone, CO  
Artist Talk, Lincoln Center, Fort Collins, CO
- 2013 Guest Speaker, Metropolitan State University of Denver - Drawing Department, Denver, CO  
Guest Juror, University of New Mexico - Architecture Department, Albuquerque, NM

### SELECT SOLO EXHIBITIONS

- 2017 *Illumination*, Winterowd Fine Art, Santa Fe, NM
- 2015 *Light & Form*, Galerie Fatiha Selam, Paris, France  
*Holiday Installation*, Calvin Klein Collection at Madison Avenue, New York, NY  
*Light & Shadow*, Shumei International Institute, Crestone, CO  
*Light Space*, Lincoln Center, Fort Collins, CO
- 2014 *Emergence*, Lora Schlesinger Gallery, Santa Monica, CA
- 2012 *Translucence*, Space Gallery, Denver, CO  
*Forming Light Installation and New Boxes*, Winterowd Fine Art, Santa Fe, NM
- 2011 *Light and Line*, Ice Cube Gallery, Denver, CO  
*Light and Line*, Vertical Arts Gallery, Steamboat Springs, CO
- 2010 *Light Works*, Ice Cube Gallery, Denver, CO
- 2008 *Small Works*, Shumei International Institute, Crestone, CO  
*Small Paintings*, Tortuga's, Longmont, CO  
*Implexities II*, Bovine Theater Gallery, Denver, CO
- 2007 *Forming Light II Installation*, Morgan Library, CSU, Fort Collins, CO  
*Forming Light Installation*, Mini Gallery, CSU, Fort Collins, CO  
*Implexities*, Saxy's, Boulder, CO  
*New Paintings*, Music Gallery, CSU, Fort Collins, CO
- 2006 *Side by Side*, St. Luke's Gallery, Fort Collins, CO

### SELECT PUBLIC COLLECTIONS

- Fox Rothschild, LLP, Denver, CO
- State of New Mexico, Department of Cultural Affairs, Santa Fe, NM
- Crestone Charter School, Crestone, CO
- Four Seasons Hotel & Residences, Denver, CO
- The Briar Rose Bed and Breakfast, Boulder, CO
- Colorado State University, Communications Department, Fort Collins, CO

# CYNTHIA - REEVES

---

## SOPHIA DIXON DILLO

### AWARDS AND HONORS

- 2008 Liberal Arts Scholarship, Colorado State University
- 2007-08 Margery Monfort Wilson Scholarship, Colorado State University
- 2007-08 Women's Association Scholarship, Colorado State University
- 2006-07 Graduate Grant, Colorado State University
- 2002 Printmaking Residency Grant, Vermont Studio Center
- 2001 Scholarship, Lacoste School of the Arts

### SELECT GROUP EXHIBITIONS

- 2016 *of sifting/flowers in the gravels/at the end of the ice age*, Anderson Ranch Arts Center, Snowmass Village, CO  
*Extended Dialogue*, Part 1, Space Gallery, Denver, CO  
*Colorado Women in Abstraction*, Center for Visual Arts, Denver, CO  
*Abstraction*, Lora Schlesinger Gallery, Santa Monica, CA  
*Lucid Art Foundation Artist-in-Residence Exhibit*, Gallery Route One, Point Reyes Station, CA  
*SYNTHESIS - of all that went before*, Averard Hotel with Galerie Fatiha Selam, London, UK  
*Repetition & Reticulation*, Milwaukee Institute of Art & Design, Milwaukee, WI
- 2014 *12 Inches of Christmas*, Space Gallery, Denver, CO  
*Surface*, Space Gallery, Denver, CO  
*10-Year Anniversary Exhibit*, Winterowd Fine Art, Santa Fe, NM  
*Unbound - Five Installations*, Arvada Center for the Arts, Arvada, CO  
*Grand Opening Exhibit*, Space Gallery, Denver, CO  
*Brave New World - Contemporary Abstraction*, Scott Richards Contemporary Art, San Francisco, CA  
*Willard Dixon & Sophia Dixon Dillo - Stillness & Activity*, Gallerie Citi, Burlingame, CA
- 2013 *Lines & Grids - Works on Paper*, Space Gallery, Denver, CO  
*30 Squared*, Space Gallery, Denver, CO  
*2nd Annual Love + Light*, A Contemporary Art & Light Exhibition, Loveland Feed & Grain, Loveland, CO
- 2012 *Full Spectrum*, Scott Richards Contemporary Art, San Francisco, CA  
*Retrospective - 11 Year Anniversary*, Space Gallery, Denver, CO  
*Art Without Illusion*, Lakewood Cultural Center, Lakewood, CO
- 2011 *1:1*, Ice Cube Gallery, Denver, CO  
*Art of the Real*, Space Gallery, Denver, CO  
*(MA)chi(N)e(MADE): Organic Precision*, Vertigo Art Space, Denver, CO
- 2010 *Friends and Family - an exhibition of Ice Cube artists and their acquaintances*, Ice Cube Gallery, Denver, CO  
*Begin Within - Three Person Exhibit*, Old Firehouse Art Center, Longmont, CO  
*Ice Cube Gallery Group Exhibit*, Ice Cube Gallery, Denver, CO
- 2009 *Master of Fine Arts Thesis Exhibit*, Curfman Gallery, Fort Collins, CO  
*Art and Science*, Curfman Gallery, Fort Collins, CO  
*WOW Show*, Core New Art Space, Denver, CO
- 2008 *Art and Science*, Curfman Gallery, Fort Collins, CO  
*Art in the Attic*, Lapis Gallery, Denver, CO
- 2007 *Nextmas Show*, Next Gallery, Denver, CO  
*Emerging Artists Exhibit*, Museum of Contemporary Art, Fort Collins, CO  
*Open Studio Exhibit*, Museum of Contemporary Art, Fort Collins, CO



## REBECCA HUTCHINSON

Hutchinson is a ceramic artist whose recent work has crossed boundaries into a new medium, that of paper. Her mysterious, biomorphic forms, constructed of handmade paper brushed with a slurry of porcelain paper-clay, straddle the divide between ceramics and textile, sculpture and vessel. She simulates the processes of organic materialization and biological formation in nature. This holistic approach gives rise to delicate structures that are reminiscent of spider webs, nest forms, massed floral forms.

She can easily be included in the conversation around environmental art, as her works respond to the concerns of specific bioregions, as well as to the constraint of her selected materials. She prefers, however, to talk about “gesture of place”, or what might be deemed a total ecosystem function: she stresses organism over mechanism, and highlights the dynamic processes of interaction among different strata of each environment.

The artist comments: “Space provides its own set of presentiments: my installations intermingle with all the dynamics of the architectural space.” One viewer noted: “In her total environments, the observer and the environment are complementary. She stirs the connection between art and spatial structures and, in so doing, reveals how ecosystem-based art can change our perception of our world, both natural and architectural.” Rebecca is a Professor of Ceramics at the University of Massachusetts, Dartmouth, MA.

CYNTHIA-REEVES



Rebecca Hutchinson, *Prairie Deep*, 2015,  
fired and unfired porcelain, paper clay, handmade paper, 1 x 12 x 12 feet



Rebecca Hutchinson, *Prairie Deep*, 2015,  
fired and unfired porcelain, paper clay, handmade paper, 1 x 12 x 12 feet





Rebecca Hutchinson, *Prairie Deep*, 2015,  
fired and unfired porcelain, paper clay, handmade paper, 1 x 12 x 12 feet

EXHIBITIONS IMAGES



*Ethereal Paper*, Ann Chuchvara, Sophia Dixon Dillo, Rebecca Hutchinson, 2015,  
Installed at CYNTHIA-REEVES, The Barn at 28 Main, Walpole, NH

CYNTHIA-REEVES



*Ethereal Paper*, Ann Chuchvara, Sophia Dixon Dillo, Rebecca Hutchinson, 2015,  
Installed at CYNTHIA-REEVES, The Barn at 28 Main, Walpole, NH

CYNTHIA-REEVES



*Ethereal Paper*, Ann Chuchvara, Sophia Dixon Dillo, Rebecca Hutchinson, 2015,  
Installed at CYNTHIA-REEVES, The Barn at 28 Main, Walpole, NH

ANN CHUCHVARA  
SOHPIA DIXON DILLO REBECCA HUTCHINSON

---

ETHEREAL PAPER

April 22 - June 3, 2017  
The Barn at 28 Main, Walpole, NH



For more information  
please (call) 212.714.0044 or (email) [info@cynthia-reeves.com](mailto:info@cynthia-reeves.com)  
[cynthia-reeves.com](http://cynthia-reeves.com)